

# WEEKLY BULLETIN ON OUTBREAKS AND OTHER EMERGENCIES

Week 16: 15 - 21 April 2024

Data as reported by: 17:00; 21 April 2024



African Region

Emergency Preparedness and Response

**0**

New events

**118**

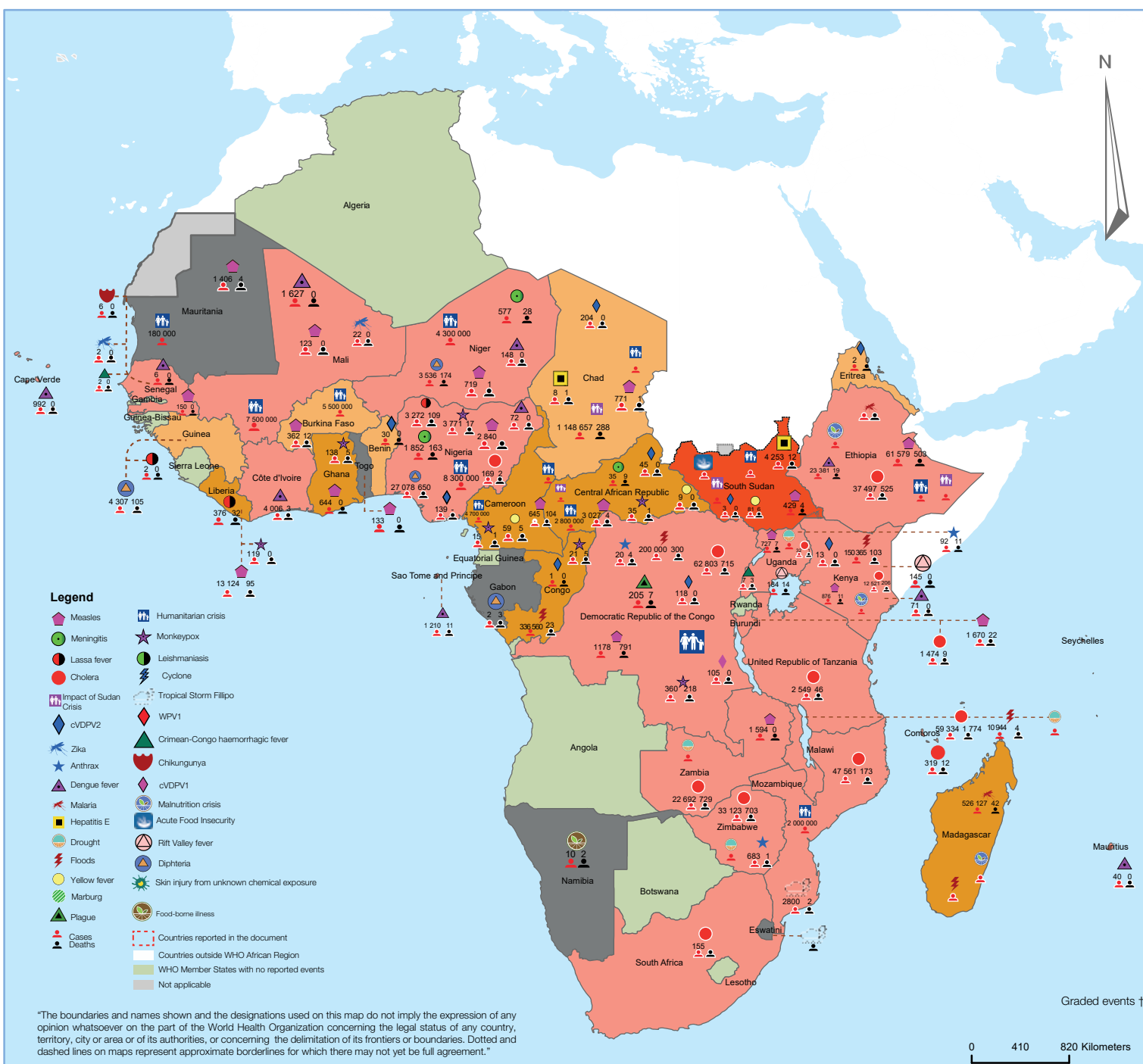
Ongoing events

**86**

Outbreaks

**32**

Humanitarian crises



**31**

Grade 3 events

**19**

Grade 2 events

**0**

Grade 1 events

**1**

Protracted 3 events

**11**

Protracted 2 events

**0**

Protracted 1 events

**56**

Ungraded events

# Overview

## Contents

1 Overview

2 - 6 Ongoing events

7 IDSR Report

8 All events currently being monitored

This Weekly Bulletin focuses on public health emergencies occurring in the WHO African region. This week's articles cover:

- Cholera in Zimbabwe
- Dengue in Sao Tome and Principe
- Cholera in Burundi

For each of these events, a brief description, followed by public health measures implemented and an interpretation of the situation, is provided.

A table is provided at the end of the bulletin with information on all new and ongoing public health events currently being monitored in the region, as well as recent events that have been controlled and closed.

### Major issues and challenges include

- Since January 2023, Burundi has been grappling with a cholera outbreak, compounded by water, sanitation, and hygiene-related challenges and limited access to clean water for the population in most of the affected areas. Furthermore, Lake Tanganyika's overflow due to heavy rains has exacerbated the situation. It underscores the need for the Government of Burundi and its partners to improve water supply and sanitation, maintain and strengthen surveillance, risk communication, and community engagement activities, and ensure the provision of vaccines to control the outbreak.

# Zimbabwe

## Cholera

32 579

Cases

701

Deaths

2.2%

CFR

### EVENT DESCRIPTION

The cholera outbreak in Zimbabwe, which started in Chegutu town, Mashonaland West Province, in February 2023, continues. The current trend indicates a decline compared to late 2023-early 2024 when the highest caseload was seen.

Since the declaration of this outbreak, Zimbabwe has recorded 32 579 suspected cholera cases, 3 939 confirmed cases, and 31 787 recoveries as of 21 April 2024, yielding a case fatality rate of 2.2%. Cumulative deaths were 701, with 87 being culture-confirmed and 614 suspected deaths. The outbreak has now spread to more than the 17 traditional cholera hotspot districts of Buhera, Chegutu, Chikomba, Chimanimani, Chipinge, Chitungwiza, Chiredzi, Harare, Gokwe North, Marondera, Mazowe, Shamva, Mutare, Murehwa, Mwenezi, Seke and Wedza.

Sixty-three (63) districts in 10 provinces of the country have reported cholera cases, with 79 new suspected cholera cases, including two laboratory-confirmed results reported on 21 April 2024. The cases were reported from Sanyati (24), Kwekwe (12), Zvimba (12), Mhondoro-Ngezi (8), Shurugwi (5), Chegutu (4), Mutare (4), Mt Darwin (3), Chiredzi (2), Chitungwiza City (2), Makonde (1), Chimanimani (1) and Shamva (1).

Among the suspected cases, cumulative samples collected and tested using Rapid Diagnostic Tests (RDT) are 10 286, of which 3 938 were RDT positive (38.3% positivity). Furthermore, of the 10 690 cultures done, 3 939 were positive (37.1% positivity). Specimens are collected and forwarded to laboratories for Microbiological Culture and Sensitivity testing. The sensitivity tests indicate that the cholera Ogawa serotype remains susceptible to Ciprofloxacin, Azithromycin, and Doxycycline, unlike previous outbreaks where resistance to ciprofloxacin was observed.

A total of 2 121 784 people had received the oral cholera vaccine, and a 92.0% national coverage was achieved. The OCV campaign targeted 26 cholera hot spot districts in the country.

### PUBLIC HEALTH ACTIONS

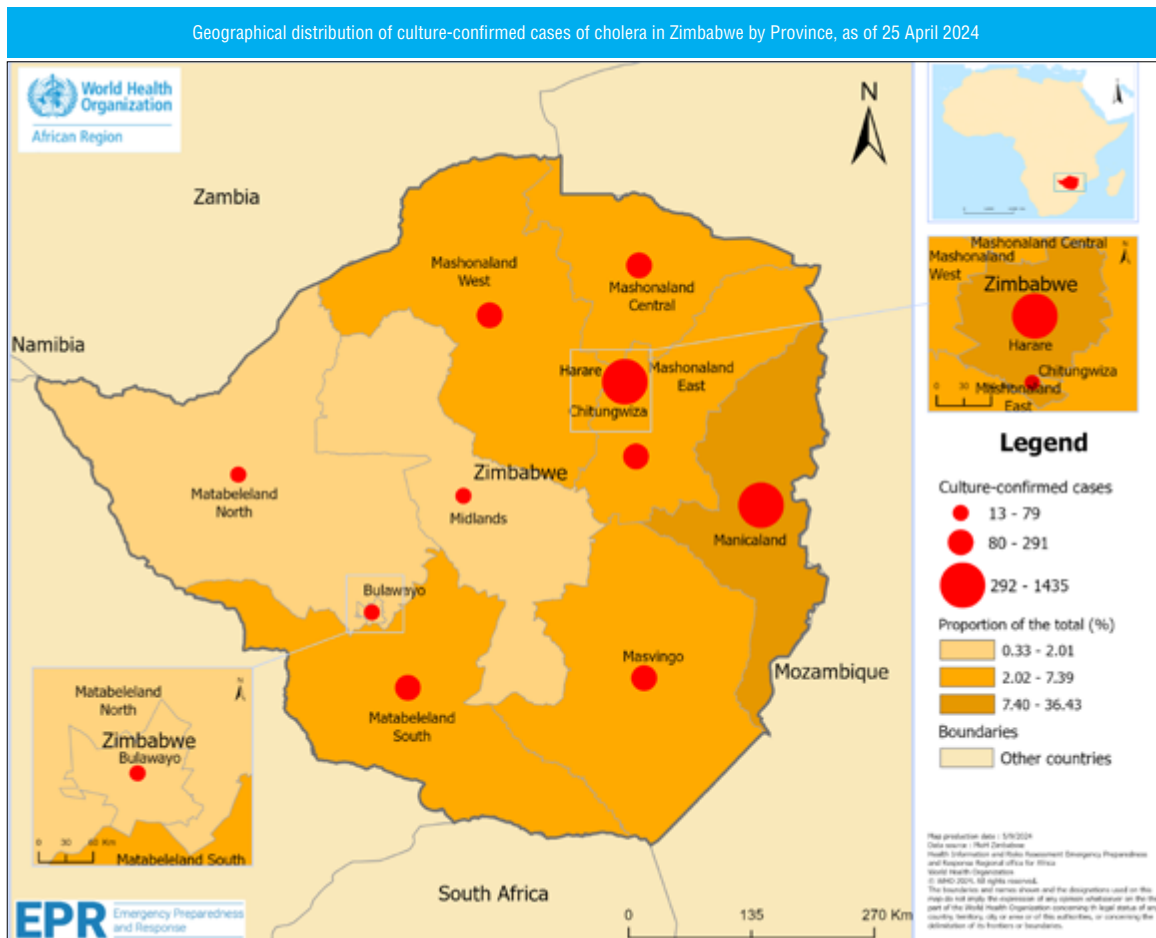
- ▶ The incident management system for cholera response was activated, with an appointed incident manager at the Public Health Emergency Operations Center overseeing coordination.

- ▶ The Ministry of Health conducted a one-day sensitization meeting in Harare with more than 120 leaders from the Zimbabwe Council of Churches, Zimbabwe Catholic Bishops Conference, Islamic Community, Dare reVadzimu, and ZINATHA to deliberate on their role in the prevention and control of cholera.
- ▶ New Cholera treatment centers (CTCS) have been opened in Old Highfield, Glenview, and Kuwadzana to decongest BRIDH, and health workers in these new CTCs were capacitated.
- ▶ A National Infection Prevention and Control training of trainers on cholera response was conducted for all ten provinces. Additionally, on-site trainings targeting identified gaps were held at St. Mary's, Chitungwiza Central Hospital, Kuwadzana, and Glenview in Harare Province.
- ▶ WHO, in collaboration with other partners, has trained healthcare workers on surveillance, case management, laboratory, risk communication, infection prevention and control, and laboratory.
- ▶ Community Event-Based Surveillance training along the migration corridors was conducted in Masvingo Bulawayo and Mat South provinces.
- ▶ The number of Oral Rehydration Points in the districts is being expanded to accommodate the rising cholera cases, alongside ongoing on-the-job training for healthcare workers in case management.
- ▶ Water boreholes are being drilled and repaired in Buhera District 17 drilled 20 were repaired, while six were equipped with solar.
- ▶ Health education on cholera prevention and control measures, including hygiene promotion, continues across provinces, complemented by distributing Information, Education, and Communication materials in clinics and communities. Additionally, risk behavior assessment is being conducted, and appropriate key messages are being given.

### SITUATION INTERPRETATION

The cholera outbreak in Zimbabwe, which began surging in late 2023, has deteriorated in the past three months. The affected areas have faced challenges that include lack of access to safe drinking water and poor

sanitation conditions. Other outbreaks of COVID-19 and anthrax are further burdening the health system. While the public health response, in collaboration with WHO and other partners, demonstrates a comprehensive approach to interrupt transmission chains, the response is hampered by various challenges that require escalated efforts and adequate resources to control the outbreak and prevent further spread.





# Republic of São Tomé and Príncipe

## Dengue fever

18 917

Cases

11

Deaths

0.1%

CFR

### EVENT DESCRIPTION

Since April 2022, São Tomé and Príncipe has been experiencing a Dengue fever outbreak, with cases reported nationwide in all seven health districts.

The index case was a 39-year-old male living in Boa Morte, Água Grande district. He had onset symptoms, including a fever, intense lower back pain, headaches, retro-orbital pain, and myalgia sensations on 12 April 2022, and tested positive on 15 April 2022.

During epidemiological week 16 (ending 21 April 2024), three new cases were recorded only in Água Grande district, with no deaths.

As of 21 April 2024, a cumulative total of 18 917 suspected cases, including 1 249 confirmed cases, have been reported in all health districts, with Água Grande district having the highest number of cases (852 cases, 68.2%), followed by Mézochi (185 cases, 14.8%), Lobata (104 cases, 8.3%), Cantagalo (49 cases, 3.9%), Caué (23 cases, 1.9%), Lembá (22 cases, 1.8%), and Autonomous Region of PríncipeP (14 cases, 1.1%).

Of the 1 249 confirmed cases, 148 (11.8%) were hospitalized, of which 39 (26.4%) presented with haemorrhagic signs. A total of 1 225 cases have recovered, and 11 deaths have been recorded so far. The four main clinical signs among reported cases are fever (1 160 cases, 93.0%), headaches (982 cases, 79.0%), myalgia (516 cases, 41.0%), and asthenia (178 cases, 14.0%).

Cumulatively, 19 127 RDTs were performed by reference laboratories (18 917 suspected cases, 210 controls), with 1 249 IgM positive cases.

### PUBLIC HEALTH ACTIONS

- Surveillance activities, including investigation and active case search at the community level, are ongoing to control the spread of the outbreak
- Healthcare workers from Central Hospital AM provide medical care and clinical follow-up for Dengue cases.
- Community-based surveillance for Dengue fever cases has been intensified for detection and reporting, and collected samples are being tested in laboratories
- Dissemination of information about dengue fever and prevention strategies has been reinforced across the community and country.

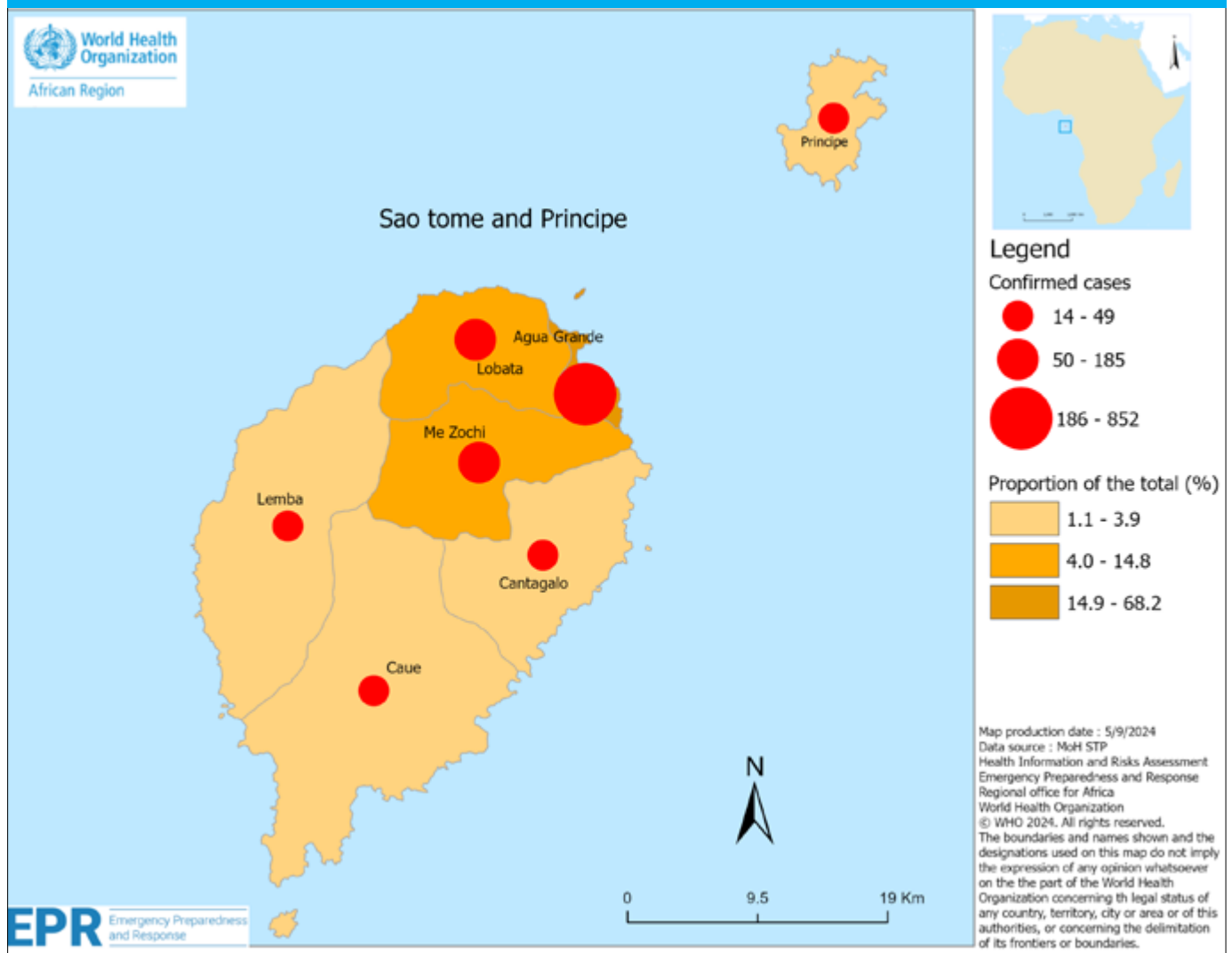
➤ Develop and disseminate weekly epidemiological bulletins and monthly situation reports on Dengue to inform all stakeholders about the outbreak.

➤ Risk communication and community engagement efforts have been strengthened through distribution of new brochures and a video titled "Fighting Dengue Every Day!" to raise awareness about Dengue prevention and control in the districts. Activities promoting the use of mosquito nets and the destruction of larval breeding sites are also being promoted.

### SITUATION INTERPRETATION

Intense and prolonged heavy rains have caused flooding and landslides in Sao Tome and Principe. This has resulted in highly unsanitary conditions in most residential areas, creating favorable conditions for the proliferation of mosquitoes and vectors of infectious diseases such as Dengue. The protracted Dengue fever outbreak requires existing public health activities to be intensified and maintained. The Ministry of Health and its partners should continue to assist in increasing epidemiological and vector surveillance, laboratory capabilities, case management, and risk communication.

Distribution of cases of Dengue by district in São Tomé and Príncipe, as of 21 April 2024



# Burundi

1 532

Cases

9

Deaths

0.6%

CFR

## Cholera

### EVENT DESCRIPTION

Burundi declared a Cholera outbreak in January 2023, with reported cases in 12 health districts, including Cibitoke, Bujumbura North, Bujumbura South, Bujumbura Center, Isare, Kabezi, Rwibaga, Mpanda, Bubanza, Mabayi, Rumonge, and Bugarama.

As of 21 April 2024, there were 27 active cases, with seven new cases recorded during epidemiological week 16 (ending 21 April 2024) and 20 old cases. The new cases originated from two health districts, with three cases reported from Bujumbura North and four cases from Bujumbura Center.

Since the beginning of the epidemic up to 21 April 2024, a cumulative total of 1532 cases have been reported in 12 health districts, with nine deaths recorded (CFR 0.6%). The health district of Bujumbura North recorded the highest number of confirmed cases (430 cases), distributed across four health areas: Buterere I (121 cases), Kinama (111 cases), Gihosha (110 cases), and Buterere II (88 cases). Isare district reported 146 cases, followed by Cibitoke, which reported 86 cases.

However, Isare district reported the highest number of deaths (6 cases, 66.7%), followed by Bujumbura North (2 cases, 22.2%) and Bujumbura South (1 case, 11.1%).

Among the 1532 reported cases, patients aged 11 to 20 years and 21 to 30 years were the most affected, with a rate of 22.1%, followed by children under 5 years old giving a rate of 18.5%. The sex ratio (M/F) was 1.2.

### PUBLIC HEALTH ACTIONS

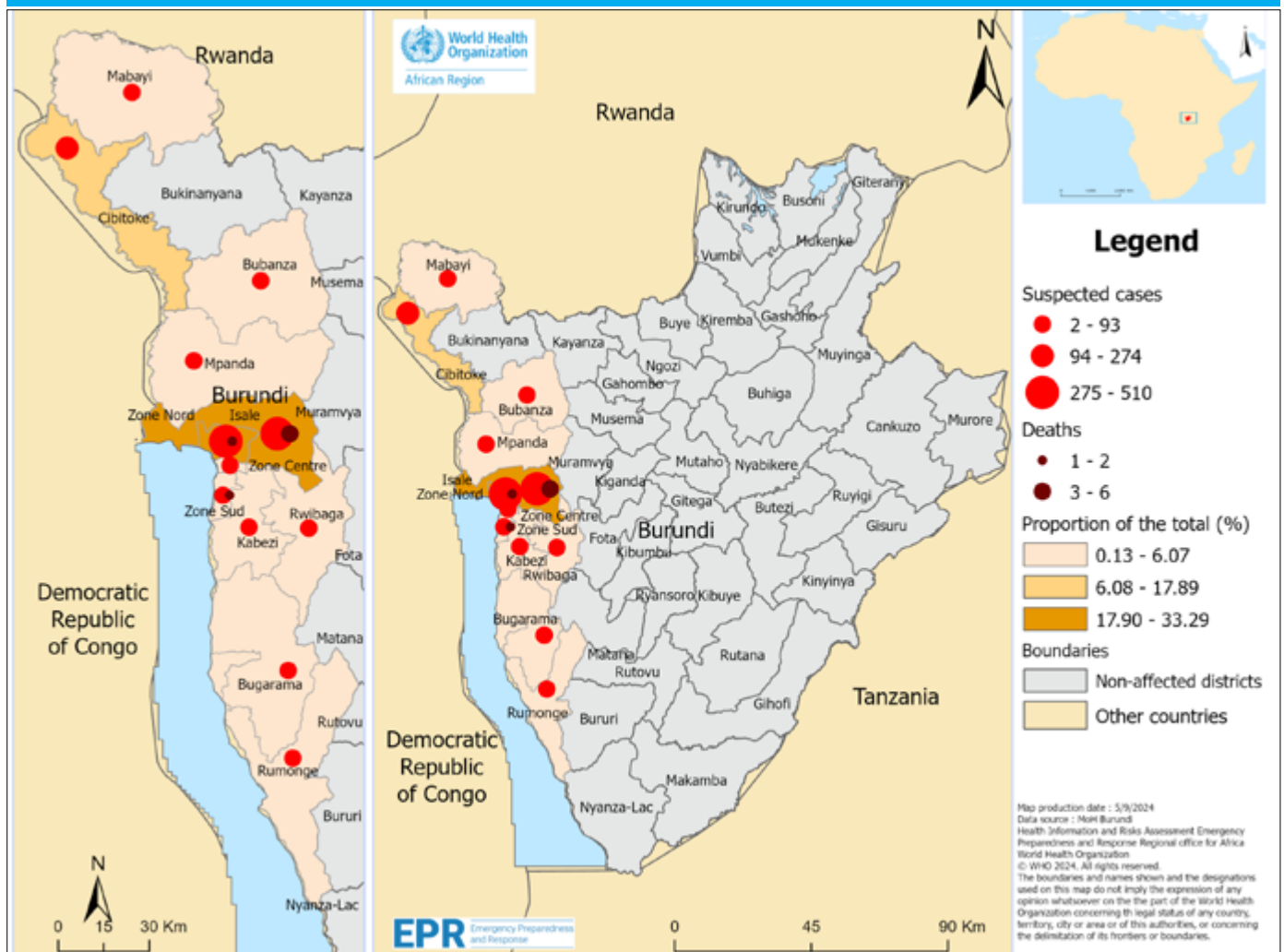
- The Burundian Ministry of Health, in coordination with the WHO and other stakeholders, has intensified its response to the cholera outbreak with regular coordination meetings held
- Enhanced surveillance in affected and at-risk areas is being conducted, with activities including contact tracing, active case search, and community-based surveillance.
- Medical staff have been deployed to support case management in Cholera Treatment Centers
- Household disinfection and population awareness campaigns on cholera prevention measures are being carried out.

- Risk communication and community engagement activities are ongoing, including educating healthcare professionals and the community through radio spots on cholera prevention.

### SITUATION INTERPRETATION

The current cholera epidemic in Burundi shows a relative downward trend in the number of cases compared to that observed since the third quarter of 2023. This indicates the effectiveness of measures and strategies implemented to control the epidemic. However, efforts need to be continued to provide access to clean water, improve hygiene conditions, and enhance surveillance. Through its Ministry of Health in collaboration with its partners, the Burundian government should maintain various public health actions, including surveillance, awareness-raising, sanitation efforts, and vaccination campaigns to control the cholera outbreak.

Distribution of suspected cases of cholera and deaths in Burundi by district, as of 21 April 2024







**81 %**  
Completeness  
for weekly  
reporting

**Map of Africa: Status of EPR Data Received**

**Legend:**

- Received consistently (Dark Green)
- Received but not consistently (Light Green)
- Omitted to share (Yellow)
- Data never received (Red)
- Not applicable (Grey)

**Map Details:**

- Scale: 0 to 1000 km
- North Arrow
- Inset Map: World map showing Africa's location

[illegible]

	Week 16	Week 17	Week 18	Week 19
Start date	15-Avr. -2024	22-Avr. -2024	29-Avr. -2024	06-May. -2024
End date	21-Avr. -2024	28-Avr. -2024	05-May -2024	12-May -2024
Deadline / Date limite	<b>24-Avr. -2024</b>	<b>01-May -2024</b>	<b>08-May -2024</b>	<b>15-May -2024</b>

# All events currently being monitored by WHO AFRO

Country	Event	Grade	Date notified to WCO	Start of reporting period	End of reporting period	Total cases	Cases Confirmed	Deaths	CFR
<b>Ongoing Events</b>									
Burkina Faso	Humanitarian crisis (Sahel Region)	Grade 2	01-Jan-2019	01-Jan-2019	18-Apr-2024	5,500,000	5,500,000	-	-
Since 2015, the security situation in the Sahel and Eastern Burkina Faso has gradually deteriorated due to attacks by armed groups. Access to healthcare services remains a major challenge for the affected population. As of February 2024, 5.5 million People needed humanitarian assistance, 3.2 million of which are children and over 2.06 million IDPs registered and 5478 schools closed. The situation remains fluid.									
Burkina Faso	Measles	Ungraded	06-Feb-2024	14-Jan-2024	09-Mar-2024	3817	362	12	0.30%
Burkina Faso is experiencing an increase in measles cases. Between week 1 and week 10 of 2024, a total of 3 817 suspected measles cases, resulting in 12 deaths, have been recorded. This rise indicates a growing trend in 2024 compared to previous years during the same period.									
Burundi	Cholera	Grade 3	01-Jan-2023	14-Dec-2022	24-Mar-2024	1 474	175	9	-
The ongoing cholera outbreak was officially declared on 1 January 2023. As of 24 March 2024, a total of 1,474 cases have already been reported since the start of the epidemic. The health districts affected are Cibitoke, Bujumbura Nord, Bujumbura Centre, Bujumbura Sud, Isare, Kabezi, Mpanda, Rwibaga, Bubanza, Mabayi, Rumonge and ugarama. There were 2 new cases in Epi Week 10 of 2024									
Burundi	Measles	Ungraded	15-Feb-2024	01-Jan-2023	12-Feb-2024	1670	1 670	22	1.30%
On 14 February 2024, Burundi's Ministry of Health reported a measles outbreak, with 20 of the country's 49 health districts experiencing active outbreaks. These districts were identified as having unvaccinated children in the 2022 National Vaccination Coverage Survey. The epidemic curve indicates a steady increase in cases since May 2023. In 2023, there were 1670 confirmed cases resulting in 22 deaths, representing a case fatality rate of 1.3%. Among the confirmed cases, 55% were aged 6-59 months, and 82% were under 15 years old. From 1 January to 12 February 2024, 34 deaths were reported in five health districts.									
Cameroon	Humanitarian crisis (North-West & South-West )	Protracted 2	01-Oct-2016	27-Jun-2018	13-Feb-2024	4,700,000	4,700,000	-	-
In the North-West and South-West regions, the unstable security situation and persistent violence are exacerbating humanitarian needs. Affected people continue to flee their homes to neighbouring villages and communities. By February 2024, the following observations were made: 4.7M people in need, 2.7M people targeted, 1M IDPs, 658k Returnees and 485K Refugees and Asylum Seekers.									
Cameroon	Humanitarian crisis (Sahel Region)	Grade 2	31-Dec-2013	27-Jun-2017	13-Feb-2024	-	-	-	-
The Far North region of Cameroon is still facing humanitarian crisis. The region situated at the border area with Nigeria and Chad, as well as the Lake Chad area, remain the most affected by the armed conflict. Between August and September this year, nearly 6 000 newly displaced people were registered in the Mokolo district following repeated attacks by non-state armed groups. More than 2 200 new asylum seekers/refugees were registered for the same period at the Gourenquel transit site, in Mokolo district of Mayo-Tsanaga department.									
Cameroon	Measles	Ungraded	02-Apr-2019	01-Jan-2024	31-Mar-2024	645	232	104	16.10%
From Week 1 to Week 13 (ending 31 March 2024), 645 suspected measles cases including 104 deaths (CFR 16%) were reported in Cameroon. A cumulative number of 232 cases were confirmed, including 129 IgM positive, 88 epidemiologically linked and 15 clinically compatible. In 2023, 6088 confirmed measles cases and at least 75 related deaths have been reported in Cameroon.									
Cameroon	Mpox	Protracted 2	24-Feb-2022	01-Jan-2024	04-Apr-2024	15	2	1	6.70%
From 1 January to 4 April 2024, 15 suspected cases of Mpox including 2 laboratory-confirmed and 1 death have been reported. From 1 January to 28 December 2023, 113 suspected cases of Mpox, including 27 laboratory-confirmed and no death were reported. In 2022, 18 confirmed cases and three deaths were reported in the country.									
Cameroon	Yellow Fever	Ungraded	20-Nov-2023	23-Jan-2023	10-Mar-2024	59	30	5	8.50%
In Cameroon, three cases of yellow fever confirmed by polymerase chain reaction (PCR) were reported in the last quarter of 2023, specifically in weeks 42 and 45. Probable and confirmed cases of yellow fever were reported consistently throughout 2023, from week 4 onward. As of week 2 of 2024, a total of 32 confirmed cases have been reported in 10 regions, including 23 PRNT-positive and nine PCR-positive cases. Of these reported cases, 30 have been classified as confirmed, including six in Douala's densely populated urban area.									
Cape Verde	Dengue	Grade 3	06-Nov-2023	06-Nov-2023	24-Mar-2024	992	543		0.00%
On 6 November 2023, the Ministry of Health Surveillance Service reported two confirmed cases of Dengue through Polymerase Chain Reaction (PCR) testing and one borderline case in the city of Praia, Santiago Island, Cabo Verde. The same day three more suspected cases were reported from the Central Hospital Dr. Agostinho Neto giving a total of six cases including two confirmed with zero deaths. As of 11 March 2023, a total of 992 suspected cases, including 543 confirmed cases and no deaths, were reported.									
Central African Republic	Humanitarian crisis	Protracted 2	11-Dec-2013	11-Dec-2013	15-Apr-2024	2,800,000	2,800,000	-	-
The Central African Republic has been facing a humanitarian crisis for more than a decade following military-political conflicts. In 2023, an estimated 2 million people were assisted and in 2024, 1.9 million people have been targeted. Of the country's population of 6.1 million inhabitants, more than half (3.4 million), need humanitarian assistance in 2024. More than 512 000 people are currently internally displaced, 2.5 million suffer from food insecurity, and 751 000 are CAR refugees.									

[Go to overview](#)
[Go to map of the outbreaks](#)

Central African Republic	Impact of Sudan crisis in CAR	Grade 3	01-May-2023	01-May-2023	06-Mar-2024	-	-	-	
On 15 April 2023, a conflict between the Rapid Support Forces (RSF) and the Sudanese Armed Force (SAF) broke out and displaced people within Sudan and in five neighboring countries among which four are part of the WHO African region (AFRO): the Central African Republic (CAR), Chad, Ethiopia, and South Sudan. As of 6 March 2024, a total of 22 627 refugees and 6 158 returnees have been recorded in CAR.									
Central African Republic	Measles	Ungraded	13-Mar-2022	01-Jan-2023	26-Nov-2023	3,027	1,145	4	0.10%
At the end of epi-week 47, 2023, the country recorded 3 027 suspected cases and 4 deaths. Since the start of 2023, 15 out of 35 health districts (43%) experienced measles outbreak.									
Central African Republic	Meningitis	Ungraded	27-Mar-2024	25-Mar-2024	25-Mar-2024	35	1	9	25.70%
On 22 March 2024, health authorities declared meningitis outbreak in Batangafo-Kabo district following a confirmation of the disease at Institut Pasteur of Bangui with the detection of <i>Neisseria meningitidis</i> (Nm) serotype W135 in one cerebrospinal fluid (CSF) sample out of 18 analyzed. The epidemic threshold was crossed on week 9, 2024 (ending 3 March). From week 7 when the first suspected case was reported through week 12, 2024, a total of 35 cases, one confirmed and nine deaths (CFR 26%) have been reported.									
Central African Republic	Mpox	Protracted 2	03-Mar-2022	04-Mar-2022	26-Nov-2023	35	35	1	2.90%
From 4 March 2022 to 26 November 2023, 35 confirmed cases of Mpox and one death have been reported in the country. Since the start of 2023, the country has reported 18 laboratory-confirmed cases, including one death.									
Central African Republic	Poliomyelitis (cVDPV2)	Grade 2	24-May-2019	24-May-2019	13-Dec-2023	45	45		0.00%
A total of 14 cases have been reported in the country in 2023. In addition, six cases were reported in 2022. Although no new cases were reported in 2021, four cVDPV2 cases were reported in 2020 and 21 cases in 2019 from several outbreaks. The number of confirmed cases reported in 2023 was revised to 14 so far.									
Central African Republic	Yellow Fever	Ungraded	12-Jun-2023	01-Jan-2023	22-Feb-2024	9	5		0.00%
In 2023, five confirmed cases of yellow fever were recorded for the following districts : Sangha-Mbaéré (1), Berbérati (1), Bambari (2), and Bossembélé (1). The number of the confirmed cases this year has been reviewed. Since the beginning of 2024, four probable cases of yellow fever (PRNT positive) were recorded in the Mbaïki health district, pending final classification. A reactive vaccination campaign in the affected districts is planned to begin in March 2024.									
Chad	Humanitarian crisis (Sahel region)	Grade 2	11-Feb-2022	01-Mar-2016	11-Feb-2024	-	-	-	-
Chad is among the African countries most affected by the armed conflict in Sudan, hosting 46.7% of Sudanese refugees to date. As of 11 February 2024, a total of 6 380 new refugees have been registered in the four crisis-affected provinces in the East, bringing the total number of Sudanese refugees to 553 150 (with 54.1% located in Adré, the epicenter of the crisis) and 144 105 Chadian returnees since the start of the conflict in Sudan.									
Chad	Impact of Sudan crisis in Chad	Grade 3	15-Apr-2023	15-Apr-2023	15-Apr-2024	1148657	1 148 657	288	0.00%
On 15 April 2023, conflict erupted between the Rapid Support Forces (RSF) and the Sudanese Armed Forces (SAF), displacing people within Sudan and across five neighbouring countries, including four WHO African Region (AFRO) members: CAR, Chad, Ethiopia, and South Sudan. As of 31 March 2024, records indicate 2.1 million affected individuals (including the host population), approximately 288 deaths, 6 352 wounded, 144 015 Chadian returnees, and 570 686 (6000 of which are new) Sudanese refugees.									
Chad	Hepatitis E	Ungraded	17-Feb-2024	02-Jan-2024	01-Mar-2024	641	8	1	0.20%
From 2 January to 29 February 2024, a total of 641 suspected cases including one death (CFR 0.16%) were reported from Ouaddaï region. Eight cases were laboratory-confirmed by RT-PCR at Institut Pasteur of Dakar on 1 March 2024. The most affected age-group is 5-11 years accounting for 37.3% of cases. The Male to female sex ratio is 1.3.									
Chad	Measles	Ungraded	24-May-2018	01-Jan-2024	11-Feb-2024	771	129	1	0.10%
Between 1 January and 11 February 2024, 771 suspected measles cases, including 129 confirmed IgM-positive cases, were reported in 84 out of 158 districts, representing 53.2% of all districts. One death was reported in the N'Djamena Centre health district in N'Djamena province. In addition, 12 health districts have exceeded the epidemic threshold, none of which are in provinces affected by humanitarian crises.									
Chad	Poliomyelitis (cVDPV2)	Grade 2	18-Oct-2019	09-Sep-2019	13-Dec-2023	204	204		0.00%
One cVDPV2 case was reported this week, bringing the total number of cases this year to 45. This latest reported case had onset of paralysis on 15 September, from Salamat region of Chad, 44 cVDPV2 cases were reported in 2022, 106 cVDPV2 cases were reported in 2020 from three different outbreaks and nine others were reported in 2019.									
Comoros	Cholera	Grade 3	02-Feb-2024	02-Feb-2024	17-Mar-2024	319		12	3.80%
Since the official cholera outbreak declaration on 2 February 2024 through 17 March 2024, a total of 319 cases and 12 deaths (CFR 3.8%) are reported in Comoros with the cholera attack rate of 38 cases per 100 000 inhabitants. The antibiogram and serotyping confirmed <i>Vibrio cholerae</i> O1 Ogawa									
Congo	Floods	Grade 2	01-Jan-2024	29-Dec-2023	24-Feb-2024			23	-
Since December 2023, nine of the twelve departments of the Republic of Congo (Cuvette, Likouala, Plateaux, Sangha, Kouilou, Niari, Pool, Brazzaville, Pointe-Noire) have been experiencing heavy floods following excessive rainfall and overflow of the Oubangui and Congo rivers. As of 8 January 2024, 23 deaths were reported and an estimated 336 560 individuals were in need of humanitarian and health assistance. As of 24 February 2024, 196 769 internally displaced persons were recorded in seven departments, including 7 407 ( ) pregnant women, 36 855 (3.8%) children less than five years old (18.7%), and 12 762 (6.5%) elderly.									

Congo	Mpox	Protracted 2	23-May-2022	22-Aug-2023	27-Nov-2023	26	21	5	19.20%
From 22 August to 27 November 2023, 21 laboratory-confirmed cases of Mpox, 5 probable cases and 5 deaths were reported .									
Congo	Poliomyelitis (cVDPV1)	Grade 2	21-Mar-2023	01-Mar-2023	13-Dec-2023	1	1	-	-
No Circulating vaccine-derived poliovirus type 1 (cVDPV1) cases were reported this week. As of 6 December 2023, only one case reported this year.									
Côte d'Ivoire	Dengue	Grade 3	10-Jul-2023	19-Jun-2023	25-Feb-2024	4,006	325	3	0.10%
An outbreak of Dengue fever is ongoing in Ivory Coast. A total of 4 006 cases have been reported from 1 January 2023 to 25 February 2024, with 325 confirmed cases and 3 deaths (CFR: 0.1 %).									
Democratic Republic of the Congo	Floods	Ungraded	09-Jan-2024	09-Jan-2024	28-Mar-2024	2 000 000	200 000	300	
Severe floods in the Democratic Republic of Congo have caused catastrophic impacts across multiple regions for weeks. By December 2023, the affected area had expanded to over 1.6 million hectares, with significant damage along the Congo River and in provinces such as Equateur and Kongo Central. The most impacted crops included cassava, corn, and peanuts, particularly in the Kinshasa peri-urban and central agricultural savannahs. As of 7 February 2024, 422,732 households had been affected, and 2,196,562 houses had collapsed across 17 provinces									
Democratic Republic of the Congo	Humanitarian crisis	Grade 3	20-Dec-2016	17-Apr-2017	20-Feb-2024	-	-	-	-
In the eastern region of the Democratic Republic of Congo (DRC), particularly in North Kivu, a protracted and complex conflict persists, characterized by the presence of numerous armed groups and the Congolese Armed Forces (FARDC) and their respective allies. This situation has led to widespread instability and an unprecedented humanitarian crisis in North Kivu province. Between February 2nd and 8th, armed clashes between the FARDC and M23 rebels resulted in the displacement of approximately 150 000 people in North Kivu, including around 50% children. Most of these displaced individuals have experienced repeated displacements, particularly from collective centers in Bweremana, Kirotshe, and Shasha in the Masisi territory, and Katsiru in the Rutshuru territory. Additionally, the fighting has also triggered the displacement of around 60,000 people southward, towards Minova and Bunyakiri in South Kivu province.									
Democratic Republic of the Congo	Anthrax	Grade 2	16-Nov-2023	04-Nov-2023	03-Jan-2024	20	1	4	20.00%
A human case of anthrax was confirmed on 16 November 2023 in Lume health area, Mutwanga health zone, North Kivu Province. From 4 November 2023 to 3 January 2024, a total of 20 suspected cases including 4 deaths (CFR 20%) were reported from four health zones of the North Kivu Province: Mutwanga (7 cases, 2 deaths), Mabalako (4 cases, 1 death), Beni (5 cases), and Vuhovi (4 cases, 1 death).									
Democratic Republic of the Congo	Cholera	Grade 3	16-Jan-2015	01-Jan-2023	12-Nov-2023	62,803	1,866	715	1.10%
As of 12 November 2023, the country had reported 62 803 cumulative cases, with 715 deaths (CFR 1.1%) across 12 affected provinces.									
Democratic Republic of the Congo	Measles	Ungraded	12-Oct-2021	01-Jan-2024	17-Mar-2024	30,144	1,178	791	2.60%
In 2023, a total of 311 500 suspected measles cases and 5 799 deaths were reported. This year , from week 1 through week 11 ( ending 17 March ), a total of 30 144 cases, 1 178 confirmed and 791 deaths are reported so far; 18 out of 26 provinces have reported confirmed measles outbreak since the beginning of this year.									
Democratic Republic of the Congo	Mpox	Protracted 2	30-Mar-2019	01-Jan-2024	11-Feb-2024	2,609	360	218	8.40%
In 2024, cumulatively from week 1 through week 6 (ending 11 February), a total of 2 609 cases, 360 confirmed and 218 deaths (CFR 8.4%) have been reported in DRC; 18 out of 26 provinces (69.0%) and 100 out of 519 health zones (19.3%) have reported at least one suspected case of mpox in 2024. In 2023, a total of 14 626 mpox cases and 654 deaths (CFR 4.5%) were reported.									
Democratic Republic of the Congo	Plague suspected	Ungraded	26-Feb-2024	01-Jan-2024	22-Mar-2024	205		7	3.40%
The Democratic Republic of the Congo (DRC) is facing plague in two health zones (Rethy and Logo) in the Ituri province. A total of 205 cases have been reported including seven deaths (CFR 3.4%) since the beginning of this year.									
Democratic Republic of the Congo	Poliomyelitis (cVDPV1)	Grade 2	27-Aug-2022	01-Jan-2023	20-Mar-2024	105	105		0.00%
As per the Global Polio Eradication Initiative (GPEI), no cVDPV1 cases were reported this week. The number of 2023 cases remains 105.									
Democratic Republic of the Congo	Poliomyelitis (cVDPV2)	Grade 2	26-Feb-2021	01-Jan-2023	20-Mar-2024	118	118		0.00%
As per the Global Polio Eradication Initiative (GPEI), no cVDPV2 cases were reported this week. The number of 2023 cases remains 118.									
Eswatini	Tropical Storm Filipo	Ungraded	11-Mar-2024	14-Mar-2024		0	0	0	
As of 14 March, heavy rain and strong winds caused by Cyclone Filipo affected the eastern Lubombo region of Eswatini. Ka-Langa, Sitsatsaweni, Makhewu, Lomahasha are areas that have been affected, and have suffered flooded houses and schools, damaged roads, downed power lines. Public transport has been heavily reduced and schools due to adverse weather. On a positive note, the rain helped alleviate drought conditions in the region.									

Ethiopia	Food insecurity (Horn of Africa crisis)	Grade 3	17-Feb-2022	01-Jan-2022	20-Mar-2024	-	-	-	-
According to the January 2024 Famine Early Warning Systems Network (FEWS NET) food security outcomes projection. Households in northern Ethiopia increasingly face extreme hardships accessing food and income which are driving ongoing Emergency (IPC Phase 4) and Crisis (IPC Phase 3) outcomes. Households have limited food stocks resulting from the failure of the 2023 meher harvest, and income-earning activities have yet to recover from recent conflict.									
Ethiopia	Humanitarian crisis (Northern Ethiopia)	Grade 3	04-Nov-2020	04-Nov-2020	12-Mar-2024	-	-	-	-
The conflict in northern Ethiopia has led to massive and acute humanitarian needs in Afar, Amhara, and Tigray, which are still only partially addressed. Vital infrastructure, such as health facilities, water installations, and schools have been destroyed. Ongoing armed conflicts in Amhara and Oromia, continue to threaten the lives of many, driving humanitarian and protection needs. As of 12 March 2024, in Amhara region, armed clashes continued to escalate between Fano militias and the Ethiopian National Defense Force (ENDF), while in Oromia region, Fano militias attacked civilians in border areas of North Shewa zone									
Ethiopia	Impact of Sudan crisis in Ethiopia	Grade 3	01-May-2023	01-May-2023	06-Mar-2024	-	-	-	-
On 15 April 2023, a conflict between the Rapid Support Forces (RSF) and the Sudanese Armed Force (SAF) broke out and displaced people within Sudan and in five neighboring countries among which four are part of the WHO African region (AFRO): the Central African Republic (CAR), Chad, Ethiopia, and South Sudan. As of 6 March 2024, the conflict has displaced 6.3 million internally and 1.7 million in neighboring countries including 42 084 refugees and 7 760 returnees in Ethiopia.									
Ethiopia	Cholera	Grade 3	17-Sep-2022	01-Aug-2022	10-Mar-2024	37,497	37,497	525	1.40%
Since the index cholera case reported on 27 August 2022 through 10 March 2024, there have been a total of 37 497 cholera cases and 525 deaths (CFR 1.4%). In 2024, a total of 8 606 cases and 58 deaths are reported.									
Ethiopia	Dengue	Grade 3	16-May-2023	10-May-2023	18-Apr-2024	23 381	23 381	19	0.00%
Since 4 April 2023, two districts (Logia and Mille) in the Afar region of northeastern Ethiopia have been experiencing an outbreak of dengue fever. As of 7 April 2024, a total of 23 209 cases and 19 deaths associated deaths (CFR 0.08%) have been reported from five affected regions. 699 of the cumulative cases have been reported in 2024 only. The outbreak is currently active in one out of the 26 initially affected Woredas									
Ethiopia	Malaria	Ungraded	31-Jan-2023	01-Jan-2023	26-Feb-2024	-	-	-	-
Ethiopia is still experiencing malaria outbreak for years now. Cumulatively in 2024, from 1 January to 26 February, a total of 705 054 malaria cases and 153 deaths were reported nationwide. Most malaria cases, were reported from Oromia (34%), followed by Amhara (18%), Southwest (13%), and South (10%). Number of malaria cases so far this year is already higher than reported during the same period in 2023									
Ethiopia	Measles	Ungraded	13-Apr-2017	01-Jan-2023	18-Apr-2024	61 579	61 579	503	0.80%
Since August 12, 2023, 237 Woredas across all regions in Ethiopia have been affected by the measles outbreak. The outbreak is active in 101 Woredas across the country out of the 359 Woredas affected. As of 24 March 2024, a total of 61 579 cases with 503 deaths have been reported, a Case Fatality Rate (CFR) of 0.82%. 15 536 of the cumulative cases and 112 deaths were reported in 2024 only. 4 new Cases and zero deaths were reported in the last seven days of the reporting period.									
Gabon	Diphtheria	Ungraded	23-Jan-2024	01-Dec-2023	19-Mar-2024	28	2	3	10.70%
On 23 January 2024, Cameroon reported a confirmed case of Diphtheria. The affected individual is a 9-year-old male from Bitam Health District in Gabon. The onset of symptoms occurred on 1 December 2023, and he sought medical consultation on 3 December 2023 in the Enongal health area, Ebolowa health district in Cameroon. The person died on 7 December 2023. The sample tested positive for Diphtheria on 23 January 2024. As of 19 March 2024, a total of 28 suspected cases, including 2 laboratory confirmed cases, 8 clinically compatible cases and three deaths (CFR: 10 %) were notified.									
Ghana	Measles	Ungraded	01-Apr-2024	01-Jan-2024	25-Feb-2024	1398	644	-	0.00%
From Week 1 to Week 8 of 2024, Ghana reported 1 398 suspected cases of measles, including 619 confirmed IgM positive cases and 25 compatible cases. Over the past four weeks, 30 health districts experienced a measles epidemic, yielding an incidence rate of 20 cases per one million inhabitants. In response to this outbreak, a measles reactive campaign is scheduled for late 2024.									
Ghana	Mpox	Protracted 2	08-Jun-2022	24-May-2022	13-Feb-2024	138	138	5	3.60%
As of week 5 of 2024, there have been 138 confirmed cases and 5 deaths(CFR 3.6%) reported from the 261 Districts.									
Guinea	Diphtheria	Grade 2	21-Aug-2023	04-Jul-2023	09-Apr-2024	4,517	4,307	105	2.30%
An outbreak of diphtheria has been reported in the Kankan region of Guinea since 4 July 2023. As of 9 April 2024, 4 517 suspected cases were reported from the Kankan, Faranah, Labé, Mamou, Conakry and N'Zérékoré regions, including 4 307 confirmed cases and 105 deaths. Of the confirmed cases, 29 were laboratory-confirmed, 4 173 were clinically compatible and 105 were epidemiologically linked. The Siguiri health district in the Kankan region is the epicenter of the outbreak, with 98.4% of suspected cases reported.									
Guinea	Lassa fever	Ungraded	03-Feb-2024	25-Jan-2024	03-Feb-2024	2	2	0	0.00%
On 03 February 2024, WHO was notified of a confirmed case of Lassa fever in a 40-year-old driver of N'Zérékoré prefecture, Guinée forestière region of southeastern Guinea. In addition to this case, there was another confirmed case of lassa fever confirmed in the health district of Kissidougou on 31 January 2024.									
Kenya	Floods	Ungraded	24-Apr-2024	24-Apr-2024	29-Apr-2024	150365	-	103	0.10%
Kenya is experiencing heavy rains and flash floods since mid April 2024 resulting in loss of lives, property and disruption of services. A total of 23 Counties have been affected, with major flooding occurring in Nairobi, Kiambu and Machakos Counties. More than 103 people dead, 29 injured, 21 missing, 150 365 people (30,073 families) displaced and nearly 191 000 affected across the country. Humanitarian partners are supporting the Government-led response to scale up relief efforts for the affected population.									



Kenya	Food insecurity (Horn of Africa crisis)	Grade 3	17-Feb-2022	01-Jan-2022	20-Mar-2024	-	-	-	-
Kenya food security outlook of February to September 2024 shows that, from February to May, pastoral household access to food and income will likely improve with increased access to the short rains harvest, increased livestock birth rates, and agricultural labor opportunities. From June to September, household access to food and income will improve with the start of the long rains harvest in July as market prices temporarily decline. From early to mid-August, some households with small farms will likely have depleted their household food stocks and will turn to markets to meet their food needs, but above-average prices will likely keep their purchasing power lower than normal									
Kenya	Cholera	Grade 3	19-Oct-2022	05-Oct-2022	04-Apr-2024	12,521	577	206	1.60%
A cholera outbreak has been ongoing in Kenya since 26 October 2022. As of 4 April 2024, a total of 12 521 cases, with 577 confirmed by culture, and 206 deaths (CFR 1.7%) have been reported in 28 affected Counties.									
Kenya	Dengue	Ungraded	24-Mar-2024	21-Mar-2024		71	38	0	0.00%
The event happened in Karikoini C village, Kirinyaga Central sub county. The outbreak has been reported from Dagahaley camp in Dadaab sub county, Garissa county. A total of seventy one (71) cases with thirty eight (38) positive by RDT and five (5) positive by PCR.									
Kenya	Measles	Ungraded	29-Jun-2022	01-Jan-2023	04-Apr-2024	876	149	11	1.30%
The measles outbreak has been continuous since January 2023. Nine counties are actively reporting measles cases; Garissa, Kilifi, Mombasa, Turkana, Samburu, Wajir, Meru, Kwale, and Mandera, since early 2024. A total of 876 cases with 11 deaths (CFR 1.3%) have been reported.									
Kenya	Poliomyelitis (cVDPV2)	Grade 2	06-Jul-2023	26-May-2023	10-Jan-2024	13	13		0.00%
According to Global Polio Eradication Initiative, no cVDPV2 cases were reported this week. There have been eight cases reported in 2023.									
Kenya	Rift Valley fever (RVF)	Ungraded	24-Jan-2024	25-Jan-2024	10-Mar-2024	145	7	0	0.00%
The ongoing Rift valley fever (RVF) outbreak has been confirmed in two counties : Marsabit and Wajir counties. A total of 145 suspected cases with seven confirmed human cases have been reported. Marsabit has reported 82 suspected cases with five confirmed by RT-PCR, while Wajir reported 63 suspected cases with two confirmed by RT-PCR. The number of confirmed cases has been reviewed from 12 to seven.									
Liberia	Lassa Fever	Ungraded	03-Mar-2022	06-Jan-2022	13-Feb-2024	376	110	32	8.50%
From January 6, 2022, to week 6 of 2024, a cumulative total of 376 cases of Lassa Fever have been reported with 110 confirmed and 32 deaths (CFR 29%).									
Liberia	Measles	Ungraded	03-Feb-2022	13-Dec-2021	13-Feb-2024	13,124	12,475	95	0.70%
Since the measles outbreak started on 13 December 2021, there have been 13 124 suspected cases, 12 475 confirmed cases, and 95 deaths with CFR 0.7%, as of week 5 of 2024. Only Maryland County remains in outbreak with 433 ongoing cases.									
Liberia	Mpox	Protracted 2	21-Jul-2022	23-Jul-2022	13-Feb-2024	119	7		0.00%
Liberia confirmed its first case of Mpox on 23 July 2022, with a cumulative total of 119 suspected cases reported and 7 confirmed. The most recent case was in week 42 of 2023 in Grand Kru and Nimba counties. No new cases have been reported in 2024.									
Madagascar	Floods	Ungraded	26-Feb-2024	05-Feb-2024	18-Feb-2024	-	-	-	
Since weeks 6 and 7, 2024 heavy rainfall has triggered flooding in the central and northeastern parts of Madagascar. This has resulted in population displacements and the loss of homes and infrastructure, including roads, bridges, agriculture, health facilities, water, sanitation, and hygiene infrastructure. The three regions affected by the situation are Atsinanana, Analanjirofo, and Analamanga									
Madagascar	Malnutrition crisis	Protracted 2	01-Jul-2021	01-Jan-2021	21-Mar-2024			-	-
The humanitarian situation in the Grand Sud remained fragile and is expected to deteriorate further, thus reversing the marginal gains made in 2023. Malnutrition rates are expected to reach IPC Phase 4 (Emergency) in Ikongo and Varika during the lean season. Nearly 196 500 children under the age of five may suffer from acute malnutrition from October 2023 to April 2024. Two districts will reach a critical phase, nine will be in a serious phase, and four will be on alert for acute malnutrition between February and April 2024.									
Madagascar	Malaria	Ungraded	28-Feb-2024	01-Jan-2024	18-Feb-2024	526127		42	0.00%
Madagascar is experiencing malaria outbreak since last year and the same trend continues in 2024. Form week 1 to week 7, 2024, a total of 526 127 cases and 42 deaths are reported, 72 districts are in outbreak and 26 in alert									
Malawi	Drought	Ungraded	26-Mar-2024	28-Mar-2024	28-Mar-2024	-	-	-	
Malawi has formally declared on 23 March 2024 a state of disaster due to drought in 23 out of its 28 districts. Preliminary assessments conducted by the Malawian government suggest that approximately 44% of the country's corn crop has either failed or suffered significant damage, directly impacting 2 million households.									
Malawi	Floods	Ungraded	28-Feb-2024	27-Feb-2024	03-Mar-2024	10944		4	
Malawi experienced torrential rains since the night of 27 February to March 2024 leading to Flooding emergencies in Nkhonkhotakota and Karonga, affecting more than 15,000 people, 7 reported deaths and 2 missing people. Nkhonkhotakota district, Dwangwa town is the most affected.									
Malawi	Cholera	Grade 3	03-Mar-2022	03-Mar-2022	07-Apr-2024	59,334	59,334	1,774	3.00%
Twenty-nine districts have reported Cholera cases since March 2022 in the Machinga district. As of 7 April 2024, a cumulative total of 59 334 cases and 1 774 deaths (CFR 3.0%) have been reported since the onset of the outbreak.									
Mali	Humanitarian crisis (Sahel region)	Grade 2	11-Sep-2017	11-Sep-2017	24-Mar-2024	7,500,000	7,500,000		0.00%
Mali is facing prolonged conflict, poverty, climate shocks, and growing insecurity. However, the current Humanitarian Response Plan for Mali needs to be more funded, with only 11% of the required funding secured for the 4.1M(million) people targeted. There has been a significant increase in IDPs in the regions of Kidal (32.8%) and Ménaka (20%). As of March 2024, over 7.1M people require humanitarian assistance and as long as it persists, 2M people have access to water, 2.5M children are at risk of Acute Malnutrition, 1.6M excluded from alert/response mechanisms and 1.8M children are deprived the right education.									

Mali	Dengue	Grade 3	12-Sep-2023	01-Jan-2024	03-Mar-2024	1,627	296		0.00%
From 1 January to 3 March 2024, Mali reported 1 627 suspected cases of dengue and no deaths across 10 health districts in three regions. Of the 1 627 samples tested with a rapid diagnostic test, 296 were positive, resulting in a positivity rate of 18.2%. The attack rate at week 9 was 1.2 cases per 100 000 population.									
Mali	Measles	Ungraded	20-Feb-2018	01-Jan-2024	03-Mar-2024	123	68		0.00%
Between week 1 and week 9 of 2024, out of 123 samples tested, 68 were IgM positive for measles, representing a positivity rate of 51%. There were 53 negative results and two were indeterminate. The incidence rate at week 9 is 0.3 per 100 000 population. No deaths have been reported. In 2023, 780 suspected measles cases were laboratory tested in Mali, of which 354 were positive and 426 were negative. A total of 32 of the 75 health districts (42.7%) recorded at least one confirmed measles outbreak in 2023.									
Mali	Zika	Ungraded	07-Dec-2023	10-Dec-2023	18-Mar-2024	22	22		0.00%
On 6 December 2023, the Ministry of Health of Mali reported 12 cases and zero deaths of Zika virus disease confirmed by real time polymerase chain reaction (RT-PCR) at the Molecular and Genomic Biology Laboratory of the University Center for Clinical Research (UCRC) of Point G. Three cases were confirmed on 1 December 2023 and nine cases on 4 December 2023. As of 18 March 2024, a total of 22 confirmed cases and zero deaths were reported from 10 health districts in Koulikoro region (9), Sikasso region (1), and Bamako district (12).									
Mauritania	Influx of refugees from Mali	Ungraded	11-Mar-2024	14-Mar-2024	19-Mar-2024	180000	-	-	-%
The humanitarian situation in the Hodh Chargui region (HEC) of Mauritania is becoming critical with the massive arrival of thousands of Malian refugees fleeing insecurity and violence. It is estimated that over 180 000 refugees and returnees are registered or awaiting registration in the Bassiknou district. According to UNHCR data, over 40% are outside the formal camp system, many with livestock, putting pressure on natural resources (such as water and grazing land) and basic social services. Both displaced populations and host communities require protection, shelter, clean water, hygiene and sanitation facilities, as well as healthcare for their well-being.									
Mauritania	Measles	Ungraded	07-Mar-2023	01-Jan-2024	17-Mar-2024	1,406	170	4	0.30%
From 1 January to 17 March 2024, Mauritania reported 1 406 suspected cases of measles, of which 170 were laboratory-confirmed, resulting in four deaths. Forty-one (41) Moughataas in the 15 wilayas have reported confirmed cases of measles in 2024. The worst affected Moughataa is Bir Mogrein. Of the 38 moughataas that have crossed the epidemic threshold this year, 25 are currently experiencing an outbreak, while 13 others are in the post-epidemic phase.									
Mauritius	Dengue	Grade 3	17-Dec-2023	17-Dec-2023	14-Jan-2024	40	40	0	0.00%
From week 50, 2023 (ending 17 December 2023) to week 2, 2024 (ending 14 January 2024), the country has recorded an upsurge in dengue cases (40 confirmed cases reported). In week 2, 2024 (ending 14 January 2024), 16 laboratory confirmed cases were reported. With the recent rains that have fallen on Mauritius, this situation is expected to worsen.									
Mozambique	Humanitarian crisis in Cabo Delgado	Protracted 2	01-Jan-2020	12-Oct-2023	21-Mar-2024	2 000 000	2 000 000	-	-
From 22 December 2022, 112 894 people have been displaced in Cabo Delgado due to NSAGs' attacks, including 91 239 farmers who abandoned their lands during harvest season. Children, women, and men comprise 62%, 23%, and 15% of the displaced. Food aid reached over 64,000 individuals, and 24,000 received shelter. By 5 March 2024, 154 children were missing, and 182 were unaccompanied. Additionally, there are 6 732 cholera cases and a conjunctivitis outbreak affecting 1 225 people, with schools disrupted.									
Mozambique	Tropical Storm Filipo	Ungraded	11-Mar-2024	14-Mar-2024		2800	2 800	2	
As of 15 March 2024, the low-pressure system, named Filipo, delivered abundant, intense rain and strong gusts of rain as it hit multiple countries, with Mozambique the worst affected. Two people have died due to the system, and around 2 800 people have been displaced. Many structures collapsed in coastal areas due to the severe storm at sea. In the south of the country, waves exceeded 21 feet in height. Meanwhile, in Maputo, the capital, streets were flooded, and traffic was significantly impeded. In this city of more than one million inhabitants, dozens of vehicles were swept away. Rainfall was heavy, exceeding eight inches in some areas. Combined with wind speeds of more than 50 mph, it created a dangerous weather situation in a country still recovering from Freddy cyclone.									
Mozambique	Cholera	Grade 3	14-Sep-2022	12-Oct-2023	18-Apr-2024	47 561	47 561	173	-
The current cholera outbreak in the country started in Niassa province on 14 September 2022. As of 7 April 2024, 47 561 cholera cases have been recorded, with 173 deaths (CRF 0.4%) in 11 affected provinces. The outbreak is currently active in eight provinces.									
Namibia	Suspected food poisoning	Ungraded	27-Feb-2024	26-Feb-2024	27-Feb-2024	10		2	20.00%
On 26 February 2024, suspected food poisoning was reported from Livayi village in Nyangana district of Kavango East region where ten people from 4 households, aged between 1 and 17 years, presented vomiting, abdominal pain, convulsions and fitting after consuming a meal made of maize porridge, fresh traditional vegetable (mutate) and soup. Two deaths were recorded while the other case-patients are being treated at the Nyangana district hospital.									
Niger	Humanitarian crisis (Sahel region)	Grade 2	01-Feb-2015	01-Feb-2015	18-Apr-2024	4,300,000	4,300,000		0.00%
Niger is contending with a severe humanitarian crisis due to regional instability in the Tillaberi, Maradi, Diffa, and Tahoua regions. The instability stems from conflicts spilling over from Mali, Burkina Faso, and Nigeria, compounded by the country's internal political turmoil following a military coup on 28 July 2023 — the third such coup in the Sahel in under three years. International sanctions, environmental challenges, deep-seated poverty, and frail social support have further strained the relief efforts. Despite these adversities, there has been a slight decrease in refugee and asylum seeker figures, although new arrivals from Chad, Mali, Burkina Faso, and Nigeria persist post-21 March 2024. Concurrently, Niger has seen the internally displaced population escalate dramatically, from 1.9 million in 2017 to 4.3 million individuals, which is 15% of the population in 2024, significantly amplifying the demand for humanitarian aid. Acute food insecurity currently afflicts 3.3 million residents, with an alarming 7.3 million more at risk of deteriorating conditions amid the ongoing turmoil.									
Niger	Dengue	Grade 3	03-Nov-2023	01-Jan-2023	24-Mar-2024	148			0.00%
A total of 148 cases of dengue fever, including zero deaths, have been reported in Niger since its onset in 2023. No new cases or deaths have been reported since the last update shared on 19th December 2023 till week 13 of 2024.									
Niger	Diphtheria	Ungraded	28-Aug-2023	04-Jul-2023	25-Feb-2024	3,536	3,536	174	4.90%
An outbreak of diphtheria has been confirmed in Matameye health district, Zinder region. The first case was reported on 17 July 2023. As of 25 February 2024, 3536 suspected cases, including 174 deaths (CFR 4.9 %) were reported. Public health response activities are ongoing in affected districts.									

Niger	Measles	Ungraded	05-Apr-2022	01-Jan-2024	10-Mar-2024	719	214	1	0.10%
As of epidemiological week 10, 2024 (ending 10 March), 719 suspected measles cases were reported, of which 404 were investigated across 42 districts in the eight regions. Of these cases, 53% (n=214) were laboratory-confirmed. Additionally, 58% (n=42) of the districts reported at least one suspected case, and 13 health districts have reached the epidemic threshold since the beginning of the year.									
Niger	Meningitis	Ungraded	07-Dec-2022	01-Jan-2024	10-Mar-2024	577	281	28	4.90%
Niger continues to notify meningitis cases. From epidemiological week 1 to week 10, 2024, a total of 577 suspected cases including 281 confirmed cases and 28 deaths (CFR 4.9%) were notified in eight regions, namely Agadez, Diffa, Dosso, Maradi, Niamey, Tahoua, Tillabéri and Zinder. Niamey and Zinder regions are the most affected.									
Nigeria	Humanitarian crisis (Sahel region)	Grade 2	10-Oct-2016	10-Oct-2016	21-Mar-2024	8,300,000	8,300,000		0.00%
People face emergency levels of food insecurity, with very high rates of severe acute malnutrition that could lead to death in Borno, Adamawa and Yobe states. As of week 11, 2024, over 6 million people are targeted for humanitarian aid, 8.3 million people need humanitarian assistance, 2.2 million IDPs, and 4.3 million people need food security aid. Due to the fluidity of the situation, the numbers are constantly changing.									
Nigeria	Cholera	Grade 3		01-Jan-2024	28-Jan-2024	169	9	2	1.20%
From 1 to 28 January 2024, 169 suspected cholera cases were reported in two states, with nine confirmed cases and two deaths (CFR: 1.2%). Children under 5 are most affected, followed by those aged 5-14, with males comprising 52%. Bayelsa State reported 144 cases (85%), with Southern Ijaw LGA recording 81 cases (48% of the national total). Cross River State reported 25 cases (15%). Compared to 2023, suspected cases decreased by 71%, with cumulative deaths down by 90% in 2024.									
Nigeria	Dengue	Grade 3	01-Nov-2023	01-Jan-2023	24-Mar-2024	72	14		0.00%
Nigeria is responding to Dengue outbreak that started in 2023. As of 3 March 2024, there has been 72 suspected cases reported with 14 confirmed and zero deaths since 19 December 2023.									
Nigeria	Diphtheria	Ungraded	01-Dec-2022	01-Dec-2022	11-Feb-2024	27,078	16,603	650	2.40%
Between week 19 of 2022 and week 6 of 2024, a total of 27 078 suspected cases of diphtheria were reported from 36 states in Nigeria. Among these cases, 16 603 were confirmed, comprising 365 laboratory-confirmed, 483 epidemiologically linked, and 15 755 clinically compatible cases.									
Nigeria	Lassa Fever	Ungraded	08-Jan-2023	01-Jan-2024	03-Mar-2024	3,272	676	109	3.30%
As of week 9 of 2024, 3914 suspected cases, including 682 laboratory-confirmed cases, were reported, with 128 reported deaths among confirmed cases, resulting in a CFR of 18.8%. Confirmed cases, including 25 HCWs, were reported from 27 states and 117 LGAs. Three out of 36 states (Edo, Ondo, and Bauchi) account for 62% of confirmed cases.									
Nigeria	Measles	Ungraded	01-Apr-2024	01-Jan-2024	24-Mar-2024	4646	2 840		0.00%
From Week 1 to Week 12 of 2024, Nigeria reported a total of 4,646 suspected cases of measles, comprising 581 confirmed IgM positive cases, 2,011 cases confirmed by epidemiological link, and 248 compatible cases. Additionally, there were 88 IgM+ cases of rubella, with 339 samples pending laboratory results. A total of 63 out of 774 Local Government Areas (8%) have reported a measles outbreak since the beginning of the year.									
Nigeria	Meningitis	Ungraded	29-Jan-2024	08-Oct-2023	10-Mar-2024	1852	135	163	8.80%
Between 1 October 2023 and 10 March 2024, a total of 1852 suspected cases including 1135 confirmed cases and 163 deaths (CFR: 8.8%) were reported from 22 out of 33 states. Of the 135 confirmed cases, 119 (82%) were caused by <i>Neisseria meningitidis</i> serogroup C (NmC) while 5 cases (3.7%) were caused by <i>Streptococcus pneumoniae</i> , 10 cases (7.4%) by <i>Haemophilus influenzae</i> and 1 (0.7%) by <i>Neisseria meningitidis</i> serogroup X (NmX). As of 10 March 2024, the outbreak remains active in six states, namely Yobe, Jigawa, Bauchi, Gombe, Katsina, and Zamfara.									
Nigeria	Mpox	Protracted 2	31-Jan-2022	01-Jan-2022	31-Dec-2023	3,771	1,086	17	0.50%
Overall, since the re-emergence of Mpox in September 2017, 3771 suspected cases have been reported from 36 States and FCTs in the country. Of these 3771 suspected cases, 1086 (28.7%) were confirmed (with males predominantly affected) from 34 States and FCT. Seventeen (17) deaths have been recorded since the re-emergence in 2017.									
Nigeria	Poliomyelitis (cVDPV2)	Grade 2	01-Jun-2018	01-Jan-2022	20-Mar-2024	139	139	-	-
No cVDPV2 case was reported this week. There were four cases reported in 2024, 87 cVDPV2 cases reported in 2023 and 48 cases in 2022.									
Senegal	CCHF	Ungraded	26-Mar-2024	22-Mar-2024	24-Mar-2024	1	1	0	0.00%
On 22 March 2024, the Institut Pasteur in Dakar (IPD) confirmed a case of Crimean-Congo hemorrhagic fever (CCHF) in a 25-year-old male farmer. The patient, originally from the Guinguinéo district, probably contracted the disease while working in the Ndoffane district. Investigations are ongoing in all the areas visited by the patient. So far 11 samples collected from contacts at the Dakar hospital have tested negative.									
Senegal	Chikungunya	Ungraded	08-Jun-2023	01-Jan-2024	17-Mar-2024	6	6		0.00%
From 1 January to 17 March 2024, six confirmed cases of Chikungunya were reported from the regions of Dakar (1), Kolda (1), Matam (2), and Tambacounda (2) in Senegal. In 2023, the total number of confirmed cases was 344.									
Senegal	Crimean-Congo Haemorrhagic fever	Ungraded	26-Apr-2024	25-Apr-2024	26-Apr-2024	2	2	0	0.00%
On 26 April 2024, WHO was informed of the confirmation of two CCHF cases in Pikine and Yeumbeul districts of Dakar. Blood samples collected from the two male cases on 17 and 19 April 2024 respectively returned positive for CCHF on PCR on 25 April 2024. PCR testing returned negative for yellow fever, dengue, RVF, West Nile, Chikungunya, and Zika. Both cases are alive. In-depth investigations are ongoing.									
Senegal	Dengue	Grade 3	14-Nov-2022	31-Jan-2023	17-Feb-2024	6	6		0.00%
Confirmed cases of dengue continue to be reported in Senegal in 2024. From 1 January to 17 March 2024, a total of 22 confirmed cases were reported in the regions of Dakar (14), Louga (4), Saint-Louis (2), Matam (1), and Thiès (1). Among these cases, 12 (55%) are in the 15-35 age group, followed by 8 (36%) in the 35-50 age group, and 2 in the 50+ age group. In 2023.									
Senegal	Measles	Ungraded	7/4/2022	01-Jan-2024	17-Mar-2024	150	150		0.00%
Depuis le début de l'année jusqu'au 17 mars 2024, 150 cas confirmés de rougeole ont été rapportés dans 11 régions du Sénégal. Les régions les plus touchées étant les régions de Louge (46), Matam (26), Kaffrine (23), Diourbel (16), Kaka (13), Saint-Louis (13).									

Senegal	Zika	Ungraded	11-Dec-2023	14-Nov-2023	25-Mar-2024	2	2		0.00%
In week 49, Senegal health authorities reported the confirmation of two cases of Zika virus disease in the districts of Sédhiou and Sokone through Polymerase Chain Reaction (PCR) testing. Details regarding the age of the women in Sokone remain unspecified, and their pregnancy status has not been disclosed. There is a potential risk for adverse outcomes including microcephaly, other congenital malformations in infants, and possibilities of premature birth or miscarriage. Investigation reports are forthcoming. No new updates on cases and deaths since October 2023									
South Africa	Cholera	Grade 3	20-Jan-2024	20-Jan-2024	18-Apr-2024	155	12	0	0.00%
The cholera outbreak has been ongoing in South Africa since December 4, 2023. It started with imported cases linked to ongoing outbreaks in Southern Africa and two locally transmitted cases from Limpopo in January. As of 4 April 2024, 12 confirmed cases with no deaths have been reported. Limpopo province is most affected with 10 of the cases. Three of the cases were imported from Zimbabwe.									
South Sudan	Food insecurity (Horn of Africa crisis)	Grade 3	18-Dec-2020	05-Apr-2021	20-Mar-2024	-	-	-	-
The latest data shows that 5.83 million people (46 % of the population) are experiencing high levels of acute food insecurity classified as IPC Phase 3 or above (Crisis or worse), with 1.64 million people in IPC Phase 4 (Emergency). An estimated 35,000 people are classified in IPC Phase 5 (Catastrophe) in the Duk (3 000) and Nyirol (3 000) counties of Jonglei State; and the Rubkona County (15,000) of Unity State. Between July 2023 and June 2024, an estimated 1.65 million children between 6-59 months are expected to suffer acute malnutrition including 480,000 million children expected to suffer Severe Acute Malnutrition (SAM) and 1.16 million expected to suffer Moderate Acute Malnutrition (MAM) , 870 000 pregnant or breastfeeding women are expected to suffer acute malnutrition in this period.									
South Sudan	Humanitarian crisis	Protracted 3	15-Aug-2016	15-Aug-2016	20-Mar-2024	-	-	-	-
South Sudan continues to face a dire humanitarian crisis. Persistent insecurity and violence, regional and national economic instability compounded by global downturns, and the devastating effects of climate change continue to inflict severe hardships on millions of South Sudanese families, particularly in terms of their food and nutritional security.									
South Sudan	Impact of Sudan crisis in South Sudan	Grade 3	15-Apr-2023	01-May-2023	06-Mar-2024	-	-	-	-
On 15 April 2023, a conflict between the Rapid Support Forces (RSF) and the Sudanese Armed Force (SAF) broke out and displaced people within Sudan and in five neighboring countries among which four are part of the WHO African region (AFRO): the Central African Republic (CAR), Chad, Ethiopia, and South Sudan. As of 6 March 2024, 124 751 refugees and 463 960 returnees are registered in South Sudan									
South Sudan	Hepatitis E	Ungraded	03-Jan-2018	01-Jan-2019	03-Apr-2024	4,253	63	12	0.30%
As of 24 March 2024, Hepatitis E outbreak was ongoing in South Sudan. On 04 March 2024, Warrap State government in South Sudan officially declared an outbreak of hepatitis E in Twic County, prompted by a 3-year-old girl's positive test result, marking a significant public health concern in the region. This alarming declaration came after 2 individuals exhibited symptoms consistent with hepatitis E and one positive case was confirmed in Juba after laboratory tests. PH prevention measures are underway									
South Sudan	Measles	Ungraded	23-Feb-2022	01-Jan-2023	24-Mar-2024	429	116	4	0.90%
As of Epi week 9, 2024, a total of 429 suspected measles cases were reported, with 116(27%) lab-confirmed, four deaths, and a case fatality rate of 0.9%. However, there were five (5) ongoing outbreaks in Ibba, Juba, Yei, Rumbek Centre, and Tonj East, respectively. Suspected/confirmed cases in Abiemnhom, Aweil Centre, Aweil South, Aweil West, Baliet, Mundri West, Pibor, Tambura, Terekeka, Torit, and Maridi continue to be reported in February. These cases have not reached the outbreak threshold and require more samples to be collected for testing in accordance with the revised SOP.									
South Sudan	Poliomyelitis (cVDPV2)	Grade 2	26-Feb-2024	01-Jan-2024	27-Mar-2024	3	3	0	0.00%
According to the Global Polio Eradication Initiative (GPEI) , two cVDPV2 cases were reported in the Upper Nile. One had an onset of paralysis in December and the one in January, making it the first cVDPV2 case in the country this year giving a total of three cases reported since last year.									
South Sudan	Yellow fever	Ungraded	24-Dec-2023	24-Dec-2023	03-Mar-2024	81	3	6	7.40%
Yellow fever outbreak is still ongoing in South Sudan since it was officially declared by the health authorities on 6 January 2024. As of 5 March 2024, a total of 81 cases including 78 suspected and three confirmed cases have been reported. About six suspected deaths have been also reported. All cases were reported from six counties in Western Equatoria state: Yambio (45), Tambura (15), Nzara (10), Ezo (06), Ibba (04), and Maridi Counties (01) as of 3 March 2024									
Tanzania, United Republic of	Cholera	Grade 3	03-Oct-2023	07-Sep-2023	24-Mar-2024	2 549	2 549	46	1.80%
As of 15 March 2024, since 5th September 2023 cholera outbreaks have been , seported in 18 regions (Mara, Arusha, Kilimanjaro, Kigoma, Kagera, Singida, Simiyu, Shinyanga, Tabora, Ruvuma, Mwanza, Geita, Rukwa, Dodoma, Manyara, Morogoro, Katavi and Dar es Salaam) in Tanzania Mainland, where a total of 2,549 cases and 46 deaths (CFR 1.8%) reported. Out of 18 regions, a Cholera outbreak was declared over in 6 regions (Geita, Mara, Arusha, Kilimanjaro, Ruvuma and Tabora).									
Togo	Measles	Ungraded	14-Mar-2024	14-Mar-2024	14-Mar-2024	133		0	0.00%
The Ministry of Health and Public Hygiene in Togo officially released a communication on 08 March informing the public about the notification of measles cases in the country, particularly in the districts of Kéran and Oti Sud, which have entered into an epidemic phase. Indeed, since the beginning of the year up to epidemiological week 9, the country has recorded a total of 133 confirmed cases of measles.									
Uganda	Food insecurity (Horn of Africa crisis)	Grade 3	17-Feb-2022	01-Jan-2022	20-Mar-2024	-	-	-	-
Uganda hosts slightly over 1.4 million refugees in 13 districts. The population analyzed includes 12 refugee host districts in which 6 are classified in IPC Phase 3 or above: Adjumani, Kiryandongo, Kyegegwa, Lamwo, Obongi and Yumbe. The food security situation is projected to gradually deteriorate during the projection period of February to June 2024, with the population in IPC Phase 3 or above increasing from 846 000 people (20 % of the analyzed population) to 963 000 people (23 % of the analyzed population).									
Uganda	Anthrax	Grade 2	27-Nov-2023	19-Nov-2023	24-Mar-2024	92	26	11	12.00%
Human anthrax outbreak which started in 2023 is still ongoing in Uganda. Amudat district reported 2 suspected anthrax cases from Karita HC IV in epi week 10 and other 2 in epi week 9. The district rapid response team has been notified to investigate the event. There were zero new cases in the 8 remaining affected districts (except in Amudat) and zero deaths in all the 9 affected districts of Abim, Amudat, Kaabong, Karenga, Kotido, Moroto, Nabilatuk, Nakapiripiri, Napak.									



Uganda	Cholera	Grade 3	04-Feb-2024	04-Feb-2024	03-Mar-2024	32	5	1	3.10%
On 4 February 2024, a new cholera outbreak was detected in Mbale city , as of 3 March 2024 , 32 cases including five confirmed and one death are reported (CFR 3.1%).									
Uganda	Crimean-Congo hemorrhagic fever	Ungraded	12-Feb-2024	28-Jan-2024	10-Mar-2024	7	5	3	42.90%
As of week 10 , 2024, the Crimean-Congo hemorrhagic fever (CCHF) outbreak is still active in Kiruhura, Lyantonde and Kyankwanzi districts. The cumulative numbers are: seven cases, five confirmed and three deaths (CFR 42.9%). The outbreak was controlled in Kampala city ( one case, one death ) and Mbarara city ( one death)									
Uganda	Measles	Ungraded	04-Oct-2023	01-Jan-2024	22-Mar-2024	727	47	7	1.00%
The measles outbreak in Kyenjonjo (81 cases, six confirmed and two deaths ) was controlled , however the following districts are still in outbreak : Kasese ( 29 cases, three confirmed), Amuru ( 27 cases, three confirmed and one death), Kassanda ( 48 cases, four confirmed and three deaths), Hoima ( 421 cases , 14 confirmed and two deaths ), Obongi ( 19 cases, five confirmed), Maracha ( five cases, four confirmed), Koboko ( 13 cases, four confirmed ),Yumbe ( 14 cases, 10 confirmed ) , Arua city ( 138 cases, 111 confirmed and one death) and Mbale ( 13 cases and five confirmed).									
Uganda	Rift Valley fever (RVF)	Ungraded	25-Sep-2023	01-Jan-2023	03-Mar-2024	184	56	14	7.60%
Since week 1 through week 44 (ending 19 November 2023), about 182 rift valley fever (RVF) cases have been reported including 54 confirmed cases and 13 deaths from Kabale, Rubanda, Mbarara, Isingiro, Bushenyi, Nakaseke, Kazo, Lira and Kakumiro districts. In 2024, only five cases have been reported. As of 3 March 2024, only Mbarara district is experiencing an active RVF outbreak with one case and zero death reported so far.									
Zambia	Drought/food insecurity	Ungraded	08-Mar-2024	15-Jan-2024	29-Feb-2024	-	-	-	
On 29 February 2024, the Zambia President declared the drought the country is currently facing a national disaster and emergency as it had devastated food production and power generation and the country struggles to recover a recent cholera outbreak. The lack of rain has devastated the agricultural sector, affecting more than one million families. The dry spell has from mid-January this year affected most of the central and southern half of the country, which has received less than normal rainfall leaving one million hectares of maize destroyed, almost half of the country's maize cultivation. It is also projected that the drought will lead to a power deficit and affect ground and surface water levels, with severe consequences for sectors beyond agriculture since more than 80 % of Zambia electricity generation comes from hydropower.									
Zambia	Cholera	Grade 3	24-Jan-2023	20-Jan-2023	07-Apr-2024	22,692	22,692	729	3.20%
The current cholera outbreak started with Lusaka Province confirming cases in the cholera-prone areas (peri-urban). From October 2023 to 7 April 2024, nine provinces have reported cases of cholera with seven provinces confirming cholera outbreaks. A total of 40 districts have confirmed local transmission. Cumulative cases stand at 22 692 with 729 deaths (CFR 3.2%).									
Zambia	Measles	Ungraded	13-Jun-2022	13-Jun-2022	27-Feb-2024	1,594	57		0.00%
In week 8, 2024, Zambia recorded a total of 54 suspected measles cases, with laboratory testing confirming 5 cases distributed across 5 districts. This adds to the cumulative count of suspected cases, at 1 594, and lab-confirmed measles cases, totaling 57 since the first week of 2024.									
Zimbabwe	Drought/food insecurity	Ungraded	05-Apr-2024	05-Apr-2024	05-Apr-2024	-	-	-	-
On 3 April 2024, Zimbabwe authorities declared state of disaster over a devastating drought that's sweeping across much of southern Africa due to El Nino phenomenon. it needs \$ two billion for humanitarian assistance. Due to the El Niño-induced drought more than 80% of country received below normal rainfall.									
Zimbabwe	Anthrax	Grade 2	13-Nov-2023	14-Nov-2023	12-Feb-2024	683		1	0.10%
As of 12 February 2023, there have been a total of 683 cases reported in Zimbabwe. Eight districts have reported cases since beginning of 2023 with the majority of cases coming from Gokwe North (63.1%) and Gokwe South (33.1%). The confirmed death was reported in 2023, from Gokwe South.									
Zimbabwe	Cholera	Grade 3	12-Feb-2023	12-Feb-2023	28-Apr-2024	33,123	3,948	703	2.10%
The first cholera outbreak in the country in 2023 started on the 12 February 2023. Cumulatively there were 33 123 cholera cases with 703 deaths (CFR 2.0%) as of 28 April 2024. All of the ten provinces are affected with majority of the cases reported from Manicaland, Harare, Mash West and Mash Cent provinces.									
<b>Closed Events</b>									
Kenya	Anthrax	Grade 2	09-Jan-2024	04-Mar-2024	18-Apr-2024	68		0	0.00%
An outbreak of Anthrax was reported on 9 January 2024 from Kandara, Maragwa, and Kigumo sub-counties. As of 22 February 2024, there have been 68 cumulative cases and zero deaths. Kigumo reported the most cases (44), followed by Kandara (22) and Maragwa (2) cases. No new cases since then. Outbreak has been controlled									

†Grading is an internal WHO process, based on the Emergency Response Framework. For further information, please see the Emergency Response Framework: <http://www.who.int/hac/about/erf/en/>.

Data are taken from the most recently available situation reports sent to WHO AFRO. Numbers are subject to change as the situations are dynamic.



© WHO Regional Office for Africa

This is not an official publication of the World Health Organization.

Correspondence on this publication may be directed to:

Dr Etien Luc Koua

Programme Area Manager, Health Emergency Information and Risk Assessment Programme.

WHO Emergency Preparedness and Response

WHO Regional Office for Africa

P O Box. 06 Cité du Djoué, Brazzaville, Congo

Email: afrooutbreak@who.int

Requests for permission to reproduce or translate this publication – whether for sale or for non-commercial distribution – should be sent to the same address.

#### WCO Contributors

- CHARIMARI, Lincoln (Zimbabwe)
- MUCHABAIWA, Trevor (Zimbabwe)
- SANTANA GIL Vilfrido (Sao Tome and Principe)
- FOTSING, Richard (Sao Tome and Principe)
- CRESPIIN, Xavier (Burundi)
- Benoit NIKOYANDEMYE (Burundi)

#### AFRO Contributors

G. Sie Williams  
J. Nguna  
C. Mildred  
D. Gianni-Ferrari  
M. Hama  
K. Freddy Kavoga  
K. Jean-Paul  
F. Sarah Dansowaa  
R. Mangosa Zaza  
G. Akpan  
C. Okot

#### Editorial Advisory Group

Dr Salam Gueye, *Regional Emergency Director*  
E. Koua  
D. Chamla  
F. Braka

#### Data sources

Data and information is provided by Member States through WHO Country Offices via regular situation reports, teleconferences and email exchanges. Situations are evolving and dynamic therefore numbers stated are subject to change.